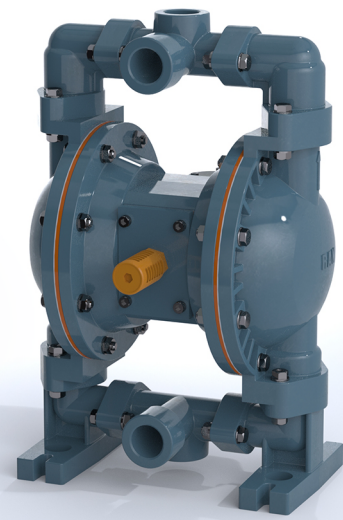




Ran[®] 1" (25.4 mm)

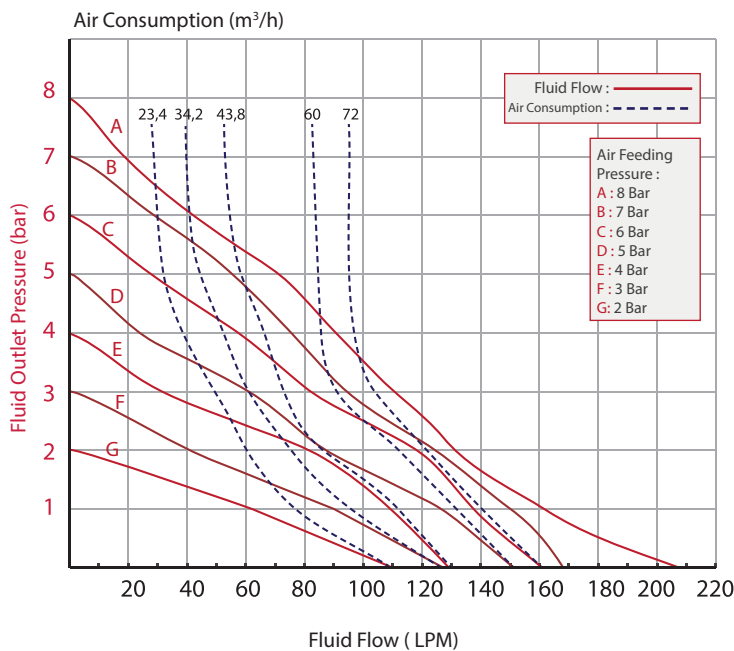
Aluminium Body Diaphragm Pump



Technical Specifications

Pump Code	EXD25M-A0	Pump Housing Material	Aluminium
Max. Flow Rate	208 lpm	Center Section Material	Aluminium
Max. Pump Speed	280 cpm	Max. Size Pumpable Solids	3 mm
Displacement per cycle	0.74 liter	Max. Suction Lift	9.5 m (Wet) 5 m (Dry)
Fluid Inlet- Outlet Size	1" NPT	Max. Operating Temperature	82 °C
Air Inlet Size	3/8"	Sound Level	75 dBA (at 5 bar)
Max. Fluid Working Pressure	8 bar	Diaphragm Material	Buna-N
Max. Air Consumption (at 5 bar)	1 m ³ /min	Check-Valve Material	Buna-N
Ratio	1:1	Weight	11.8 kg

Performance Curves



Made in Turkey



ATEX II 2gd IIb t135

Test Conditions: All tests are made with water. Suction hose submerged in the fluid. Muffler not used. All the values are shown are approximate and not binding.

Example: To pump 88 lpm against a discharge pressure of 2 bar, requires 5 bar and 43.8 m³/h air consumption.

Dimensions

A	270
B	410
C	225
D	323
E	209
F	120
G	10

All dimensions are in mm.

